



LAND  
MOBILITY

*How to set up a*

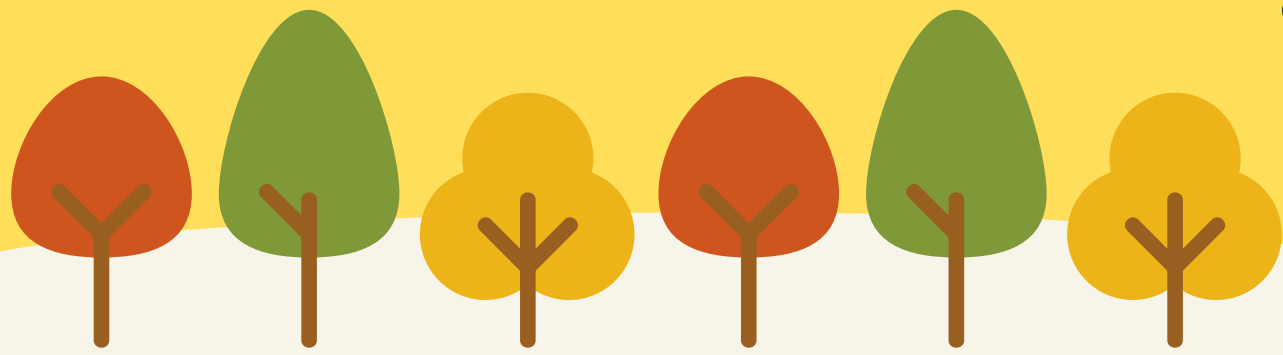
# LAND MOBILITY SERVICE

A comprehensive info pack providing all the  
fundamental information on Land Mobility.

**LAND-MOBILITY.EU/**



"We have neglected the truth that a good farmer is a craftsman of the highest order, a kind of artist."



The Land Mobility Service was set up to provide options for land owners and opportunities for young farmers through advice on and facilitation of collaborative farming arrangements. Depending on the wishes of the land owners and the type of business of the farmers, the service has a number of different arrangements tailored to suit any specific situation. Land Mobility matches land owners with farmers.



The Land Mobility Service has set up **more than 500 arrangements** covering in excess of **47,000 acres**



# WHAT IS LAND MOBILITY?

**A SERVICE BY THE FARMERS FOR THE FARMERS**

The service has three key elements:

- Create awareness and provide information
- Deliver arrangements
- Support operating arrangements



## DID YOU KNOW?

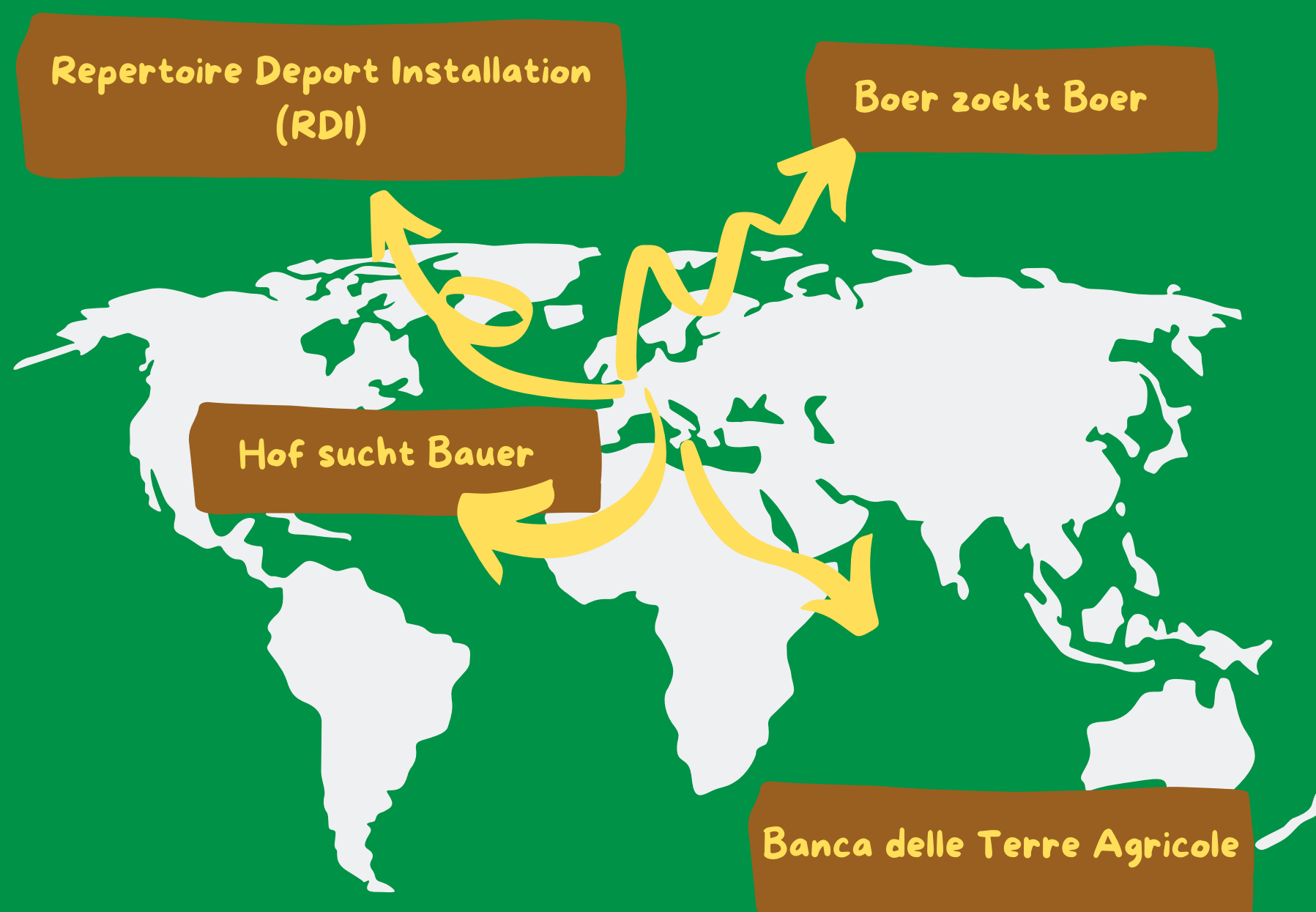
Only 6% of farmers are **under 35** and 26% are **over 65**. Many older farmers do not have successors.

For more information visit our project website:  
<http://land-mobility.eu/>

Or the website of the original Land Mobility Service set up by Maca na Feirme  
<https://landmobility.ie/>

# OTHER LAND MOBILITY SERVICES

Good nutrition and physical activity are important parts of leading a healthy lifestyle. A balanced diet can help you to reach and maintain a healthy weight, reduce your risk of chronic diseases, and promote your overall health.



**RDI**

Provides an online platform for farmers looking to either sell their land or form a partnership with other farmers and then facilitates an agreement between the two parties



**BOER ZOEKT  
BOER**

This online platform helps farmers who have no successors find young individuals who have the knowledge and experience but need land



**HOF SUCHT  
BAUER**

Similar to Land Mobility, the Hofborse platform helps match land owners with young individuals who are seeking to set up a business in the agricultural sector



**BDTA**

An online tool set up to help individuals seeking to rent or buy land. It provides an inventory of agricultural land that is nationally available.

# WHAT TO LOOK FOR

## WHEN SETTING UP YOUR OWN LAND MOBILITY SERVICE



### Identify the need for it

Before doing anything else you should do some research into the areas you are targetting to ensure there is a need for Land Mobility. An age imbalance in the farmer sector can mean farmers are seeking successors.

## FUNDING

Farm organisations, dairy processing coops and other agribusinesses can be a great source of funding to help get your land mobility service off its feet and gain momentum. They can also be very useful in terms of dissemination and reaching your target audience.

## Network

Identify the best methods to reach not only your target audience but also other organisations which work in the same field. This will provide you with more knowledge and information, as well help spread the word about your service.

## Staff Training

The Land Mobility project modules can be used to train potential staff how to operate, help the business grow and how to handle situations they might come across during the land mobility process.

## DEFAULT ARRANGEMENTS

The Irish Land Mobility service has experienced staff that have the knowledge and experience to provide solutions fitting for any arrangements. Start your business by having a couple of preferred arrangements.

